



#### FEATURES:

- RoHS Compliant
- Low Ripple and Noise
- High Efficiency up to 82%
- 7 Pin SIP Package
- Operating Temperature -40°C to +85°C
- Pin Compatible with Multiple Manufacturers
- Isolation of 1000, 3000, 4000, 5200 & 6000 VDC



#### Models Single output

| Model          | Input Voltage (V) | Output Voltage (V) | Output Current Max (mA) | Input Current Full Load   No Load (mA) |    | Isolation (VDC) | Max Capacitive Load (µF) | Efficiency (%) |
|----------------|-------------------|--------------------|-------------------------|--|----|-----------------|--------------------------|----------------|
| AM2D-0503SZ    | 4.5-5.5           | 3.3                | 400                     | 513                                    | 16 | 1000            | 470                      | 72             |
| AM2D-0505SZ    | 4.5-5.5           | 5                  | 400                     | 488                                    | 20 | 1000            | 470                      | 78             |
| AM2D-0507SZ    | 4.5-5.5           | 7.2                | 278                     | 494                                    | 22 | 1000            | 470                      | 80             |
| AM2D-0509SZ    | 4.5-5.5           | 9                  | 222                     | 476                                    | 35 | 1000            | 470                      | 80             |
| AM2D-0512SZ    | 4.5-5.5           | 12                 | 167                     | 470                                    | 30 | 1000            | 470                      | 82             |
| AM2D-0515SZ    | 4.5-5.5           | 15                 | 134                     | 465                                    | 25 | 1000            | 470                      | 82             |
| AM2D-0518SZ    | 4.5-5.5           | 18                 | 111                     | 494                                    | 25 | 1000            | 470                      | 82             |
| AM2D-0524SZ    | 4.5-5.5           | 24                 | 83                      | 471                                    | 22 | 1000            | 470                      | 82             |
| AM2D-1203SZ    | 10.8-13.2         | 3.3                | 400                     | 242                                    | 20 | 1000            | 470                      | 65             |
| AM2D-1205SZ    | 10.8-13.2         | 5                  | 400                     | 203                                    | 20 | 1000            | 470                      | 77             |
| AM2D-1207SZ    | 10.8-13.2         | 7.2                | 278                     | 201                                    | 15 | 1000            | 470                      | 80             |
| AM2D-1209SZ    | 10.8-13.2         | 9                  | 222                     | 201                                    | 17 | 1000            | 470                      | 80             |
| AM2D-1212SZ    | 10.8-13.2         | 12                 | 167                     | 196                                    | 15 | 1000            | 470                      | 82             |
| AM2D-1215SZ    | 10.8-13.2         | 15                 | 134                     | 196                                    | 20 | 1000            | 470                      | 82             |
| AM2D-1218SZ    | 10.8-13.2         | 18                 | 111                     | 198                                    | 18 | 1000            | 470                      | 80             |
| AM2D-1224SZ    | 10.8-13.2         | 24                 | 83                      | 201                                    | 15 | 1000            | 470                      | 80             |
| AM2D-2403SZ    | 21.6-26.4         | 3.3                | 400                     | 107                                    | 5  | 1000            | 470                      | 72             |
| AM2D-2405SZ    | 21.6-26.4         | 5                  | 400                     | 104                                    | 10 | 1000            | 470                      | 79             |
| AM2D-2407SZ    | 21.6-26.4         | 7.2                | 278                     | 104                                    | 10 | 1000            | 470                      | 80             |
| AM2D-2409SZ    | 21.6-26.4         | 9                  | 222                     | 100                                    | 10 | 1000            | 470                      | 80             |
| AM2D-2412SZ    | 21.6-26.4         | 12                 | 167                     | 98                                     | 8  | 1000            | 470                      | 80             |
| AM2D-2415SZ    | 21.6-26.4         | 15                 | 134                     | 99                                     | 8  | 1000            | 470                      | 82             |
| AM2D-2418SZ    | 21.6-26.4         | 18                 | 111                     | 102                                    | 10 | 1000            | 470                      | 82             |
| AM2D-2424SZ    | 21.6-26.4         | 24                 | 83                      | 100                                    | 13 | 1000            | 470                      | 82             |
| AM2D-4803SZ    | 43.2-52.8         | 3.3                | 400                     | 53                                     | 5  | 1000            | 470                      | 72             |
| AM2D-4805SZ    | 43.2-52.8         | 5                  | 400                     | 53                                     | 5  | 1000            | 470                      | 79             |
| AM2D-4807SZ    | 43.2-52.8         | 7.2                | 278                     | 52                                     | 10 | 1000            | 470                      | 80             |
| AM2D-4809SZ    | 43.2-52.8         | 9                  | 222                     | 52                                     | 10 | 1000            | 470                      | 80             |
| AM2D-4812SZ    | 43.2-52.8         | 12                 | 167                     | 50                                     | 10 | 1000            | 470                      | 80             |
| AM2D-4815SZ    | 43.2-52.8         | 15                 | 134                     | 52                                     | 8  | 1000            | 470                      | 82             |
| AM2D-4818SZ    | 43.2-52.8         | 18                 | 111                     | 51                                     | 8  | 1000            | 470                      | 82             |
| AM2D-4824SZ    | 43.2-52.8         | 24                 | 83                      | 51                                     | 10 | 1000            | 470                      | 82             |
| AM2D-0503SH30Z | 4.5-5.5           | 3.3                | 400                     | 513                                    | 16 | 3000            | 470                      | 72             |
| AM2D-0505SH30Z | 4.5-5.5           | 5                  | 400                     | 488                                    | 20 | 3000            | 470                      | 78             |
| AM2D-0507SH30Z | 4.5-5.5           | 7.2                | 278                     | 494                                    | 22 | 3000            | 470                      | 80             |
| AM2D-0509SH30Z | 4.5-5.5           | 9                  | 222                     | 476                                    | 35 | 3000            | 470                      | 80             |
| AM2D-0512SH30Z | 4.5-5.5           | 12                 | 167                     | 470                                    | 30 | 3000            | 470                      | 82             |
| AM2D-0515SH30Z | 4.5-5.5           | 15                 | 134                     | 465                                    | 25 | 3000            | 470                      | 82             |
| AM2D-0518SH30Z | 4.5-5.5           | 18                 | 111                     | 494                                    | 25 | 3000            | 470                      | 82             |
| AM2D-0524SH30Z | 4.5-5.5           | 24                 | 83                      | 471                                    | 22 | 3000            | 470                      | 82             |
| AM2D-1203SH30Z | 10.8-13.2         | 3.3                | 400                     | 242                                    | 20 | 3000            | 470                      | 65             |
| AM2D-1205SH30Z | 10.8-13.2         | 5                  | 400                     | 203                                    | 20 | 3000            | 470                      | 77             |
| AM2D-1207SH30Z | 10.8-13.2         | 7.2                | 278                     | 201                                    | 15 | 3000            | 470                      | 80             |
| AM2D-1209SH30Z | 10.8-13.2         | 9                  | 222                     | 201                                    | 17 | 3000            | 470                      | 80             |
| AM2D-1212SH30Z | 10.8-13.2         | 12                 | 167                     | 196                                    | 15 | 3000            | 470                      | 82             |
| AM2D-1215SH30Z | 10.8-13.2         | 15                 | 134                     | 196                                    | 20 | 3000            | 470                      | 82             |

**Models**  
**Single output (continued)**

| Model          | Input Voltage (V) | Output Voltage (V) | Output Current Max (mA) | Input Current Full Load   No Load (mA) |    | Isolation (VDC) | Max Capacitive Load (µF) | Efficiency (%) |
|----------------|-------------------|--------------------|-------------------------|--|----|-----------------|--------------------------|----------------|
| AM2D-1218SH30Z | 10.8-13.2         | 18                 | 111                     | 198                                    | 18 | 3000            | 470                      | 80             |
| AM2D-1224SH30Z | 10.8-13.2         | 24                 | 83                      | 201                                    | 15 | 3000            | 470                      | 80             |
| AM2D-2403SH30Z | 21.6-26.4         | 3.3                | 400                     | 107                                    | 5  | 3000            | 470                      | 72             |
| AM2D-2405SH30Z | 21.6-26.4         | 5                  | 400                     | 104                                    | 10 | 3000            | 470                      | 79             |
| AM2D-2407SH30Z | 21.6-26.4         | 7.2                | 278                     | 104                                    | 10 | 3000            | 470                      | 80             |
| AM2D-2409SH30Z | 21.6-26.4         | 9                  | 222                     | 100                                    | 10 | 3000            | 470                      | 80             |
| AM2D-2412SH30Z | 21.6-26.4         | 12                 | 167                     | 98                                     | 8  | 3000            | 470                      | 80             |
| AM2D-2415SH30Z | 21.6-26.4         | 15                 | 134                     | 99                                     | 8  | 3000            | 470                      | 82             |
| AM2D-2418SH30Z | 21.6-26.4         | 18                 | 111                     | 102                                    | 10 | 3000            | 470                      | 82             |
| AM2D-2424SH30Z | 21.6-26.4         | 24                 | 83                      | 100                                    | 13 | 3000            | 470                      | 82             |
| AM2D-4803SH30Z | 43.2-52.8         | 3.3                | 400                     | 53                                     | 5  | 3000            | 470                      | 72             |
| AM2D-4805SH30Z | 43.2-52.8         | 5                  | 400                     | 53                                     | 5  | 3000            | 470                      | 79             |
| AM2D-4807SH30Z | 43.2-52.8         | 7.2                | 278                     | 52                                     | 10 | 3000            | 470                      | 80             |
| AM2D-4809SH30Z | 43.2-52.8         | 9                  | 222                     | 52                                     | 10 | 3000            | 470                      | 80             |
| AM2D-4812SH30Z | 43.2-52.8         | 12                 | 167                     | 50                                     | 10 | 3000            | 470                      | 80             |
| AM2D-4815SH30Z | 43.2-52.8         | 15                 | 134                     | 52                                     | 8  | 3000            | 470                      | 82             |
| AM2D-4818SH30Z | 43.2-52.8         | 18                 | 111                     | 51                                     | 8  | 3000            | 470                      | 82             |
| AM2D-4824SH30Z | 43.2-52.8         | 24                 | 83                      | 51                                     | 10 | 3000            | 470                      | 82             |
|                |                   |                    |                         |  |    |                 | 470                      |                |
| AM2D-0503SH40Z | 4.5-5.5           | 3.3                | 400                     | 513                                    | 16 | 4000            | 470                      | 72             |
| AM2D-0505SH40Z | 4.5-5.5           | 5                  | 400                     | 488                                    | 20 | 4000            | 470                      | 78             |
| AM2D-0507SH40Z | 4.5-5.5           | 7.2                | 278                     | 494                                    | 22 | 4000            | 470                      | 80             |
| AM2D-0509SH40Z | 4.5-5.5           | 9                  | 222                     | 476                                    | 35 | 4000            | 470                      | 80             |
| AM2D-0512SH40Z | 4.5-5.5           | 12                 | 167                     | 470                                    | 30 | 4000            | 470                      | 82             |
| AM2D-0515SH40Z | 4.5-5.5           | 15                 | 134                     | 465                                    | 25 | 4000            | 470                      | 82             |
| AM2D-0518SH40Z | 4.5-5.5           | 18                 | 111                     | 494                                    | 25 | 4000            | 470                      | 82             |
| AM2D-0524SH40Z | 4.5-5.5           | 24                 | 83                      | 471                                    | 22 | 4000            | 470                      | 82             |
| AM2D-1203SH40Z | 10.8-13.2         | 3.3                | 400                     | 242                                    | 20 | 4000            | 470                      | 65             |
| AM2D-1205SH40Z | 10.8-13.2         | 5                  | 400                     | 203                                    | 20 | 4000            | 470                      | 77             |
| AM2D-1207SH40Z | 10.8-13.2         | 7.2                | 278                     | 201                                    | 15 | 4000            | 470                      | 80             |
| AM2D-1209SH40Z | 10.8-13.2         | 9                  | 222                     | 201                                    | 17 | 4000            | 470                      | 80             |
| AM2D-1212SH40Z | 10.8-13.2         | 12                 | 167                     | 196                                    | 15 | 4000            | 470                      | 82             |
| AM2D-1215SH40Z | 10.8-13.2         | 15                 | 134                     | 196                                    | 20 | 4000            | 470                      | 82             |
| AM2D-1218SH40Z | 10.8-13.2         | 18                 | 111                     | 198                                    | 18 | 4000            | 470                      | 80             |
| AM2D-1224SH40Z | 10.8-13.2         | 24                 | 83                      | 201                                    | 15 | 4000            | 470                      | 80             |
| AM2D-2403SH40Z | 21.6-26.4         | 3.3                | 400                     | 107                                    | 5  | 4000            | 470                      | 72             |
| AM2D-2405SH40Z | 21.6-26.4         | 5                  | 400                     | 104                                    | 10 | 4000            | 470                      | 79             |
| AM2D-2407SH40Z | 21.6-26.4         | 7.2                | 278                     | 104                                    | 10 | 4000            | 470                      | 80             |
| AM2D-2409SH40Z | 21.6-26.4         | 9                  | 222                     | 100                                    | 10 | 4000            | 470                      | 80             |
| AM2D-2412SH40Z | 21.6-26.4         | 12                 | 167                     | 98                                     | 8  | 4000            | 470                      | 80             |
| AM2D-2415SH40Z | 21.6-26.4         | 15                 | 134                     | 99                                     | 8  | 4000            | 470                      | 82             |
| AM2D-2418SH40Z | 21.6-26.4         | 18                 | 111                     | 102                                    | 10 | 4000            | 470                      | 82             |
| AM2D-2424SH40Z | 21.6-26.4         | 24                 | 83                      | 100                                    | 13 | 4000            | 470                      | 80             |
| AM2D-4803SH40Z | 43.2-52.8         | 3.3                | 400                     | 53                                     | 5  | 4000            | 470                      | 72             |
| AM2D-4805SH40Z | 43.2-52.8         | 5                  | 400                     | 53                                     | 5  | 4000            | 470                      | 79             |
| AM2D-4807SH40Z | 43.2-52.8         | 7.2                | 278                     | 52                                     | 10 | 4000            | 470                      | 80             |
| AM2D-4809SH40Z | 43.2-52.8         | 9                  | 222                     | 52                                     | 10 | 4000            | 470                      | 80             |
| AM2D-4812SH40Z | 43.2-52.8         | 12                 | 167                     | 50                                     | 10 | 4000            | 470                      | 80             |
| AM2D-4815SH40Z | 43.2-52.8         | 15                 | 134                     | 52                                     | 8  | 4000            | 470                      | 82             |
| AM2D-4818SH40Z | 43.2-52.8         | 18                 | 111                     | 51                                     | 8  | 4000            | 470                      | 82             |
| AM2D-4824SH40Z | 43.2-52.8         | 24                 | 83                      | 51                                     | 10 | 4000            | 470                      | 82             |
|                |                   |                    |                         |  |    |                 | 470                      |                |
| AM2D-0503SH52Z | 4.5-5.5           | 3.3                | 400                     | 513                                    | 16 | 5200            | 470                      | 72             |
| AM2D-0505SH52Z | 4.5-5.5           | 5                  | 400                     | 488                                    | 20 | 5200            | 470                      | 78             |
| AM2D-0507SH52Z | 4.5-5.5           | 7.2                | 278                     | 494                                    | 22 | 5200            | 470                      | 80             |

**Models**  
**Single output (continued)**

| Model          | Input Voltage (V) | Output Voltage (V) | Output Current Max (mA) | Input Current Full Load   No Load (mA) |    | Isolation (VDC) | Max Capacitive Load (µF) | Efficiency (%) |
|----------------|-------------------|--------------------|-------------------------|--|----|-----------------|--------------------------|----------------|
| AM2D-0509SH52Z | 4.5-5.5           | 9                  | 222                     | 476                                    | 35 | 5200            | 470                      | 80             |
| AM2D-0512SH52Z | 4.5-5.5           | 12                 | 167                     | 470                                    | 30 | 5200            | 470                      | 82             |
| AM2D-0515SH52Z | 4.5-5.5           | 15                 | 134                     | 465                                    | 25 | 5200            | 470                      | 82             |
| AM2D-0518SH52Z | 4.5-5.5           | 18                 | 111                     | 494                                    | 25 | 5200            | 470                      | 82             |
| AM2D-0524SH52Z | 4.5-5.5           | 24                 | 83                      | 471                                    | 22 | 5200            | 470                      | 82             |
| AM2D-1203SH52Z | 10.8-13.2         | 3.3                | 400                     | 242                                    | 20 | 5200            | 470                      | 65             |
| AM2D-1205SH52Z | 10.8-13.2         | 5                  | 400                     | 203                                    | 20 | 5200            | 470                      | 77             |
| AM2D-1207SH52Z | 10.8-13.2         | 7.2                | 278                     | 201                                    | 15 | 5200            | 470                      | 80             |
| AM2D-1209SH52Z | 10.8-13.2         | 9                  | 222                     | 201                                    | 17 | 5200            | 470                      | 80             |
| AM2D-1212SH52Z | 10.8-13.2         | 12                 | 167                     | 196                                    | 15 | 5200            | 470                      | 82             |
| AM2D-1215SH52Z | 10.8-13.2         | 15                 | 134                     | 196                                    | 20 | 5200            | 470                      | 82             |
| AM2D-1218SH52Z | 10.8-13.2         | 18                 | 111                     | 198                                    | 18 | 5200            | 470                      | 80             |
| AM2D-1224SH52Z | 10.8-13.2         | 24                 | 83                      | 201                                    | 15 | 5200            | 470                      | 80             |
| AM2D-2403SH52Z | 21.6-26.4         | 3.3                | 400                     | 107                                    | 5  | 5200            | 470                      | 72             |
| AM2D-2405SH52Z | 21.6-26.4         | 5                  | 400                     | 104                                    | 10 | 5200            | 470                      | 79             |
| AM2D-2407SH52Z | 21.6-26.4         | 7.2                | 278                     | 104                                    | 10 | 5200            | 470                      | 80             |
| AM2D-2409SH52Z | 21.6-26.4         | 9                  | 222                     | 100                                    | 10 | 5200            | 470                      | 80             |
| AM2D-2412SH52Z | 21.6-26.4         | 12                 | 167                     | 98                                     | 8  | 5200            | 470                      | 80             |
| AM2D-2415SH52Z | 21.6-26.4         | 15                 | 134                     | 99                                     | 8  | 5200            | 470                      | 82             |
| AM2D-2418SH52Z | 21.6-26.4         | 18                 | 111                     | 102                                    | 10 | 5200            | 470                      | 82             |
| AM2D-2424SH52Z | 21.6-26.4         | 24                 | 83                      | 100                                    | 13 | 5200            | 470                      | 80             |
| AM2D-4803SH52Z | 43.2-52.8         | 3.3                | 400                     | 53                                     | 5  | 5200            | 470                      | 72             |
| AM2D-4805SH52Z | 43.2-52.8         | 5                  | 400                     | 53                                     | 5  | 5200            | 470                      | 79             |
| AM2D-4807SH52Z | 43.2-52.8         | 7.2                | 278                     | 52                                     | 10 | 5200            | 470                      | 80             |
| AM2D-4809SH52Z | 43.2-52.8         | 9                  | 222                     | 52                                     | 10 | 5200            | 470                      | 80             |
| AM2D-4812SH52Z | 43.2-52.8         | 12                 | 167                     | 50                                     | 10 | 5200            | 470                      | 80             |
| AM2D-4815SH52Z | 43.2-52.8         | 15                 | 134                     | 52                                     | 8  | 5200            | 470                      | 82             |
| AM2D-4818SH52Z | 43.2-52.8         | 18                 | 111                     | 51                                     | 8  | 5200            | 470                      | 82             |
| AM2D-4824SH52Z | 43.2-52.8         | 24                 | 83                      | 51                                     | 10 | 5200            | 470                      | 82             |
| AM2D-0503SH60Z | 4.5-5.5           | 3.3                | 400                     | 513                                    | 16 | 6000            | 470                      | 72             |
| AM2D-0505SH60Z | 4.5-5.5           | 5                  | 400                     | 488                                    | 20 | 6000            | 470                      | 78             |
| AM2D-0507SH60Z | 4.5-5.5           | 7.2                | 278                     | 494                                    | 22 | 6000            | 470                      | 80             |
| AM2D-0509SH60Z | 4.5-5.5           | 9                  | 222                     | 476                                    | 35 | 6000            | 470                      | 80             |
| AM2D-0512SH60Z | 4.5-5.5           | 12                 | 167                     | 470                                    | 30 | 6000            | 470                      | 82             |
| AM2D-0515SH60Z | 4.5-5.5           | 15                 | 134                     | 465                                    | 25 | 6000            | 470                      | 82             |
| AM2D-0518SH60Z | 4.5-5.5           | 18                 | 111                     | 494                                    | 25 | 6000            | 470                      | 82             |
| AM2D-0524SH60Z | 4.5-5.5           | 24                 | 83                      | 471                                    | 22 | 6000            | 470                      | 82             |
| AM2D-1203SH60Z | 10.8-13.2         | 3.3                | 400                     | 242                                    | 20 | 6000            | 470                      | 65             |
| AM2D-1205SH60Z | 10.8-13.2         | 5                  | 400                     | 203                                    | 20 | 6000            | 470                      | 77             |
| AM2D-1207SH60Z | 10.8-13.2         | 7.2                | 278                     | 201                                    | 15 | 6000            | 470                      | 80             |
| AM2D-1209SH60Z | 10.8-13.2         | 9                  | 222                     | 201                                    | 17 | 6000            | 470                      | 80             |
| AM2D-1212SH60Z | 10.8-13.2         | 12                 | 167                     | 196                                    | 15 | 6000            | 470                      | 82             |
| AM2D-1215SH60Z | 10.8-13.2         | 15                 | 134                     | 196                                    | 20 | 6000            | 470                      | 82             |
| AM2D-1218SH60Z | 10.8-13.2         | 18                 | 111                     | 198                                    | 18 | 6000            | 470                      | 80             |
| AM2D-1224SH60Z | 10.8-13.2         | 24                 | 83                      | 201                                    | 15 | 6000            | 470                      | 80             |
| AM2D-2403SH60Z | 21.6-26.4         | 3.3                | 400                     | 107                                    | 5  | 6000            | 470                      | 72             |
| AM2D-2405SH60Z | 21.6-26.4         | 5                  | 400                     | 104                                    | 10 | 6000            | 470                      | 79             |
| AM2D-2407SH60Z | 21.6-26.4         | 7.2                | 278                     | 104                                    | 10 | 6000            | 470                      | 80             |
| AM2D-2409SH60Z | 21.6-26.4         | 9                  | 222                     | 100                                    | 10 | 6000            | 470                      | 80             |
| AM2D-2412SH60Z | 21.6-26.4         | 12                 | 167                     | 98                                     | 8  | 6000            | 470                      | 80             |
| AM2D-2415SH60Z | 21.6-26.4         | 15                 | 134                     | 99                                     | 8  | 6000            | 470                      | 82             |
| AM2D-2418SH60Z | 21.6-26.4         | 18                 | 111                     | 102                                    | 10 | 6000            | 470                      | 82             |
| AM2D-2424SH60Z | 21.6-26.4         | 24                 | 83                      | 100                                    | 13 | 6000            | 470                      | 80             |
| AM2D-4803SH60Z | 43.2-52.8         | 3.3                | 400                     | 53                                     | 5  | 6000            | 470                      | 72             |

**Models**  
**Single output (continued)**

| Model          | Input Voltage (V) | Output Voltage (V) | Output Current Max (mA) | Input Current Full Load   No Load (mA) |    | Isolation (VDC) | Max Capacitive Load (μF) | Efficiency (%) |
|----------------|-------------------|--------------------|-------------------------|--|----|-----------------|--------------------------|----------------|
| AM2D-4805SH60Z | 43.2-52.8         | 5                  | 400                     | 53                                     | 5  | 6000            | 470                      | 79             |
| AM2D-4807SH60Z | 43.2-52.8         | 7.2                | 278                     | 52                                     | 10 | 6000            | 470                      | 80             |
| AM2D-4809SH60Z | 43.2-52.8         | 9                  | 222                     | 52                                     | 10 | 6000            | 470                      | 80             |
| AM2D-4812SH60Z | 43.2-52.8         | 12                 | 167                     | 50                                     | 10 | 6000            | 470                      | 80             |
| AM2D-4815SH60Z | 43.2-52.8         | 15                 | 134                     | 52                                     | 8  | 6000            | 470                      | 82             |
| AM2D-4818SH60Z | 43.2-52.8         | 18                 | 111                     | 51                                     | 8  | 6000            | 470                      | 82             |
| AM2D-4824SH60Z | 43.2-52.8         | 24                 | 83                      | 51                                     | 10 | 6000            | 470                      | 82             |

**Models**  
**Dual output**

| Model          | Input Voltage (V) | Output Voltage (V) | Output Current Max (mA) | Input Current Full Load   No Load (mA) |    | Isolation (VDC) | Max Capacitive Load (μF) | Efficiency (%) |
|----------------|-------------------|--------------------|-------------------------|--|----|-----------------|--------------------------|----------------|
| AM2D-0503DZ    | 4.5-5.5           | ±3.3               | ±200                    | 506                                    | 20 | 1000            | ±220                     | 65             |
| AM2D-0505DZ    | 4.5-5.5           | ±5                 | ±200                    | 470                                    | 20 | 1000            | ±220                     | 72             |
| AM2D-0507DZ    | 4.5-5.5           | ±7.2               | ±139                    | 482                                    | 25 | 1000            | ±220                     | 72             |
| AM2D-0509DZ    | 4.5-5.5           | ±9                 | ±111                    | 476                                    | 30 | 1000            | ±220                     | 77             |
| AM2D-0512DZ    | 4.5-5.5           | ±12                | ±83                     | 471                                    | 30 | 1000            | ±220                     | 78             |
| AM2D-0515DZ    | 4.5-5.5           | ±15                | ±67                     | 465                                    | 25 | 1000            | ±220                     | 80             |
| AM2D-0518DZ    | 4.5-5.5           | ±18                | ±55                     | 500                                    | 32 | 1000            | ±220                     | 80             |
| AM2D-0524DZ    | 4.5-5.5           | ±24                | ±42                     | 500                                    | 25 | 1000            | ±220                     | 80             |
| AM2D-1203DZ    | 10.8-13.2         | ±3.3               | ±200                    | 219                                    | 12 | 1000            | ±220                     | 67             |
| AM2D-1205DZ    | 10.8-13.2         | ±5                 | ±200                    | 211                                    | 10 | 1000            | ±220                     | 75             |
| AM2D-1207DZ    | 10.8-13.2         | ±7.2               | ±139                    | 201                                    | 16 | 1000            | ±220                     | 76             |
| AM2D-1209DZ    | 10.8-13.2         | ±9                 | ±111                    | 196                                    | 10 | 1000            | ±220                     | 77             |
| AM2D-1212DZ    | 10.8-13.2         | ±12                | ±83                     | 194                                    | 13 | 1000            | ±220                     | 82             |
| AM2D-1215DZ    | 10.8-13.2         | ±15                | ±67                     | 201                                    | 15 | 1000            | ±220                     | 82             |
| AM2D-1218DZ    | 10.8-13.2         | ±18                | ±55                     | 198                                    | 18 | 1000            | ±220                     | 82             |
| AM2D-1224DZ    | 10.8-13.2         | ±24                | ±42                     | 201                                    | 15 | 1000            | ±220                     | 82             |
| AM2D-2403DZ    | 21.6-26.4         | ±3.3               | ±200                    | 110                                    | 10 | 1000            | ±220                     | 68             |
| AM2D-2405DZ    | 21.6-26.4         | ±5                 | ±200                    | 102                                    | 8  | 1000            | ±220                     | 75             |
| AM2D-2407DZ    | 21.6-26.4         | ±7.2               | ±139                    | 104                                    | 10 | 1000            | ±220                     | 75             |
| AM2D-2409DZ    | 21.6-26.4         | ±9                 | ±111                    | 102                                    | 8  | 1000            | ±220                     | 80             |
| AM2D-2412DZ    | 21.6-26.4         | ±12                | ±83                     | 100                                    | 8  | 1000            | ±220                     | 82             |
| AM2D-2415DZ    | 21.6-26.4         | ±15                | ±67                     | 98                                     | 8  | 1000            | ±220                     | 82             |
| AM2D-2418DZ    | 21.6-26.4         | ±18                | ±55                     | 102                                    | 10 | 1000            | ±220                     | 82             |
| AM2D-2424DZ    | 21.6-26.4         | ±24                | ±42                     | 100                                    | 12 | 1000            | ±220                     | 82             |
| AM2D-4803DZ    | 43.2-52.8         | ±3.3               | ±200                    | 53                                     | 5  | 1000            | ±220                     | 68             |
| AM2D-4805DZ    | 43.2-52.8         | ±5                 | ±200                    | 53                                     | 5  | 1000            | ±220                     | 75             |
| AM2D-4807DZ    | 43.2-52.8         | ±7.2               | ±139                    | 52                                     | 10 | 1000            | ±220                     | 75             |
| AM2D-4809DZ    | 43.2-52.8         | ±9                 | ±111                    | 52                                     | 8  | 1000            | ±220                     | 80             |
| AM2D-4812DZ    | 43.2-52.8         | ±12                | ±83                     | 50                                     | 5  | 1000            | ±220                     | 82             |
| AM2D-4815DZ    | 43.2-52.8         | ±15                | ±67                     | 52                                     | 8  | 1000            | ±220                     | 82             |
| AM2D-4818DZ    | 43.2-52.8         | ±18                | ±55                     | 51                                     | 8  | 1000            | ±220                     | 82             |
| AM2D-4824DZ    | 43.2-52.8         | ±24                | ±42                     | 51                                     | 10 | 1000            | ±220                     | 82             |
|                |                   |                    |                         | 506                                    | 20 |                 |                          |                |
| AM2D-0503DH30Z | 4.5-5.5           | ±3.3               | ±200                    | 470                                    | 20 | 3000            | ±220                     | 65             |
| AM2D-0505DH30Z | 4.5-5.5           | ±5                 | ±200                    | 482                                    | 25 | 3000            | ±220                     | 72             |
| AM2D-0507DH30Z | 4.5-5.5           | ±7.2               | ±139                    | 476                                    | 30 | 3000            | ±220                     | 72             |
| AM2D-0509DH30Z | 4.5-5.5           | ±9                 | ±111                    | 471                                    | 30 | 3000            | ±220                     | 77             |
| AM2D-0512DH30Z | 4.5-5.5           | ±12                | ±83                     | 465                                    | 25 | 3000            | ±220                     | 78             |
| AM2D-0515DH30Z | 4.5-5.5           | ±15                | ±67                     | 500                                    | 32 | 3000            | ±220                     | 80             |
| AM2D-0518DH30Z | 4.5-5.5           | ±18                | ±55                     | 500                                    | 25 | 3000            | ±220                     | 80             |
| AM2D-0524DH30Z | 4.5-5.5           | ±24                | ±42                     | 219                                    | 12 | 3000            | ±220                     | 80             |

**Models**  
**Dual output (continued)**

| Model          | Input Voltage (V) | Output Voltage (V) | Output Current Max (mA) | Input Current Full Load   No Load (mA) |    | Isolation (VDC) | Max Capacitive Load (µF) | Efficiency (%) |
|----------------|-------------------|--------------------|-------------------------|--|----|-----------------|--------------------------|----------------|
| AM2D-1203DH30Z | 10.8-13.2         | ±3.3               | ±200                    | 211                                    | 10 | 3000            | ±220                     | 67             |
| AM2D-1205DH30Z | 10.8-13.2         | ±5                 | ±200                    | 201                                    | 16 | 3000            | ±220                     | 75             |
| AM2D-1207DH30Z | 10.8-13.2         | ±7.2               | ±139                    | 196                                    | 10 | 3000            | ±220                     | 76             |
| AM2D-1209DH30Z | 10.8-13.2         | ±9                 | ±111                    | 194                                    | 13 | 3000            | ±220                     | 77             |
| AM2D-1212DH30Z | 10.8-13.2         | ±12                | ±83                     | 201                                    | 15 | 3000            | ±220                     | 82             |
| AM2D-1215DH30Z | 10.8-13.2         | ±15                | ±67                     | 198                                    | 18 | 3000            | ±220                     | 82             |
| AM2D-1218DH30Z | 10.8-13.2         | ±18                | ±55                     | 201                                    | 15 | 3000            | ±220                     | 82             |
| AM2D-1224DH30Z | 10.8-13.2         | ±24                | ±42                     | 110                                    | 10 | 3000            | ±220                     | 82             |
| AM2D-2403DH30Z | 21.6-26.4         | ±3.3               | ±200                    | 102                                    | 8  | 3000            | ±220                     | 68             |
| AM2D-2405DH30Z | 21.6-26.4         | ±5                 | ±200                    | 104                                    | 10 | 3000            | ±220                     | 75             |
| AM2D-2407DH30Z | 21.6-26.4         | ±7.2               | ±139                    | 102                                    | 8  | 3000            | ±220                     | 75             |
| AM2D-2409DH30Z | 21.6-26.4         | ±9                 | ±111                    | 100                                    | 8  | 3000            | ±220                     | 80             |
| AM2D-2412DH30Z | 21.6-26.4         | ±12                | ±83                     | 98                                     | 8  | 3000            | ±220                     | 82             |
| AM2D-2415DH30Z | 21.6-26.4         | ±15                | ±67                     | 102                                    | 10 | 3000            | ±220                     | 82             |
| AM2D-2418DH30Z | 21.6-26.4         | ±18                | ±55                     | 100                                    | 12 | 3000            | ±220                     | 82             |
| AM2D-2424DH30Z | 21.6-26.4         | ±24                | ±42                     | 53                                     | 5  | 3000            | ±220                     | 82             |
| AM2D-4803DH30Z | 43.2-52.8         | ±3.3               | ±200                    | 53                                     | 5  | 3000            | ±220                     | 68             |
| AM2D-4805DH30Z | 43.2-52.8         | ±5                 | ±200                    | 52                                     | 10 | 3000            | ±220                     | 75             |
| AM2D-4807DH30Z | 43.2-52.8         | ±7.2               | ±139                    | 52                                     | 8  | 3000            | ±220                     | 75             |
| AM2D-4809DH30Z | 43.2-52.8         | ±9                 | ±111                    | 50                                     | 5  | 3000            | ±220                     | 80             |
| AM2D-4812DH30Z | 43.2-52.8         | ±12                | ±83                     | 52                                     | 8  | 3000            | ±220                     | 82             |
| AM2D-4815DH30Z | 43.2-52.8         | ±15                | ±67                     | 51                                     | 8  | 3000            | ±220                     | 82             |
| AM2D-4818DH30Z | 43.2-52.8         | ±18                | ±55                     | 51                                     | 10 | 3000            | ±220                     | 82             |
| AM2D-4824DH30Z | 43.2-52.8         | ±24                | ±42                     | 506                                    | 20 | 3000            | ±220                     | 82             |
| AM2D-0503DH40Z | 4.5-5.5           | ±3.3               | ±200                    | 506                                    | 20 | 4000            | ±220                     | 65             |
| AM2D-0505DH40Z | 4.5-5.5           | ±5                 | ±200                    | 470                                    | 20 | 4000            | ±220                     | 72             |
| AM2D-0507DH40Z | 4.5-5.5           | ±7.2               | ±139                    | 482                                    | 25 | 4000            | ±220                     | 72             |
| AM2D-0509DH40Z | 4.5-5.5           | ±9                 | ±111                    | 476                                    | 30 | 4000            | ±220                     | 77             |
| AM2D-0512DH40Z | 4.5-5.5           | ±12                | ±83                     | 471                                    | 30 | 4000            | ±220                     | 78             |
| AM2D-0515DH40Z | 4.5-5.5           | ±15                | ±67                     | 465                                    | 25 | 4000            | ±220                     | 80             |
| AM2D-0518DH40Z | 4.5-5.5           | ±18                | ±55                     | 500                                    | 32 | 4000            | ±220                     | 80             |
| AM2D-0524DH40Z | 4.5-5.5           | ±24                | ±42                     | 500                                    | 25 | 4000            | ±220                     | 80             |
| AM2D-1203DH40Z | 10.8-13.2         | ±3.3               | ±200                    | 219                                    | 12 | 4000            | ±220                     | 67             |
| AM2D-1205DH40Z | 10.8-13.2         | ±5                 | ±200                    | 211                                    | 10 | 4000            | ±220                     | 75             |
| AM2D-1207DH40Z | 10.8-13.2         | ±7.2               | ±139                    | 201                                    | 16 | 4000            | ±220                     | 76             |
| AM2D-1209DH40Z | 10.8-13.2         | ±9                 | ±111                    | 196                                    | 10 | 4000            | ±220                     | 77             |
| AM2D-1212DH40Z | 10.8-13.2         | ±12                | ±83                     | 194                                    | 13 | 4000            | ±220                     | 82             |
| AM2D-1215DH40Z | 10.8-13.2         | ±15                | ±67                     | 201                                    | 15 | 4000            | ±220                     | 82             |
| AM2D-1218DH40Z | 10.8-13.2         | ±18                | ±55                     | 198                                    | 18 | 4000            | ±220                     | 82             |
| AM2D-1224DH40Z | 10.8-13.2         | ±24                | ±42                     | 201                                    | 15 | 4000            | ±220                     | 82             |
| AM2D-2403DH40Z | 21.6-26.4         | ±3.3               | ±200                    | 110                                    | 10 | 4000            | ±220                     | 68             |
| AM2D-2405DH40Z | 21.6-26.4         | ±5                 | ±200                    | 102                                    | 8  | 4000            | ±220                     | 75             |
| AM2D-2407DH40Z | 21.6-26.4         | ±7.2               | ±139                    | 104                                    | 10 | 4000            | ±220                     | 75             |
| AM2D-2409DH40Z | 21.6-26.4         | ±9                 | ±111                    | 102                                    | 8  | 4000            | ±220                     | 80             |
| AM2D-2412DH40Z | 21.6-26.4         | ±12                | ±83                     | 100                                    | 8  | 4000            | ±220                     | 82             |
| AM2D-2415DH40Z | 21.6-26.4         | ±15                | ±67                     | 98                                     | 8  | 4000            | ±220                     | 82             |
| AM2D-2418DH40Z | 21.6-26.4         | ±18                | ±55                     | 102                                    | 10 | 4000            | ±220                     | 82             |
| AM2D-2424DH40Z | 21.6-26.4         | ±24                | ±42                     | 100                                    | 12 | 4000            | ±220                     | 82             |
| AM2D-4803DH40Z | 43.2-52.8         | ±3.3               | ±200                    | 53                                     | 5  | 4000            | ±220                     | 68             |
| AM2D-4805DH40Z | 43.2-52.8         | ±5                 | ±200                    | 53                                     | 5  | 4000            | ±220                     | 75             |
| AM2D-4807DH40Z | 43.2-52.8         | ±7.2               | ±139                    | 52                                     | 10 | 4000            | ±220                     | 75             |
| AM2D-4809DH40Z | 43.2-52.8         | ±9                 | ±111                    | 52                                     | 8  | 4000            | ±220                     | 80             |
| AM2D-4812DH40Z | 43.2-52.8         | ±12                | ±83                     | 50                                     | 5  | 4000            | ±220                     | 82             |
| AM2D-4815DH40Z | 43.2-52.8         | ±15                | ±67                     | 52                                     | 8  | 4000            | ±220                     | 82             |

**Models**

**Dual output (continued)**

| Model          | Input Voltage (V) | Output Voltage (V) | Output Current Max (mA) | Input Current Full Load   No Load (mA) |    | Isolation (VDC) | Max Capacitive Load (µF) | Efficiency (%) |
|----------------|-------------------|--------------------|-------------------------|--|----|-----------------|--------------------------|----------------|
| AM2D-4818DH40Z | 43.2-52.8         | ±18                | ±55                     | 51                                     | 8  | 4000            | ±220                     | 82             |
| AM2D-4824DH40Z | 43.2-52.8         | ±24                | ±42                     | 51                                     | 10 | 4000            | ±220                     | 82             |
| AM2D-0503DH52Z | 4.5-5.5           | ±3.3               | ±200                    | 506                                    | 20 | 5200            | ±220                     | 65             |
| AM2D-0505DH52Z | 4.5-5.5           | ±5                 | ±200                    | 470                                    | 20 | 5200            | ±220                     | 72             |
| AM2D-0507DH52Z | 4.5-5.5           | ±7.2               | ±139                    | 482                                    | 25 | 5200            | ±220                     | 72             |
| AM2D-0509DH52Z | 4.5-5.5           | ±9                 | ±111                    | 476                                    | 30 | 5200            | ±220                     | 77             |
| AM2D-0512DH52Z | 4.5-5.5           | ±12                | ±83                     | 471                                    | 30 | 5200            | ±220                     | 78             |
| AM2D-0515DH52Z | 4.5-5.5           | ±15                | ±67                     | 465                                    | 25 | 5200            | ±220                     | 80             |
| AM2D-0518DH52Z | 4.5-5.5           | ±18                | ±55                     | 500                                    | 32 | 5200            | ±220                     | 80             |
| AM2D-0524DH52Z | 4.5-5.5           | ±24                | ±42                     | 500                                    | 25 | 5200            | ±220                     | 80             |
| AM2D-1203DH52Z | 10.8-13.2         | ±3.3               | ±200                    | 219                                    | 12 | 5200            | ±220                     | 67             |
| AM2D-1205DH52Z | 10.8-13.2         | ±5                 | ±200                    | 211                                    | 10 | 5200            | ±220                     | 75             |
| AM2D-1207DH52Z | 10.8-13.2         | ±7.2               | ±139                    | 201                                    | 16 | 5200            | ±220                     | 76             |
| AM2D-1209DH52Z | 10.8-13.2         | ±9                 | ±111                    | 196                                    | 10 | 5200            | ±220                     | 77             |
| AM2D-1212DH52Z | 10.8-13.2         | ±12                | ±83                     | 194                                    | 13 | 5200            | ±220                     | 82             |
| AM2D-1215DH52Z | 10.8-13.2         | ±15                | ±67                     | 201                                    | 15 | 5200            | ±220                     | 82             |
| AM2D-1218DH52Z | 10.8-13.2         | ±18                | ±55                     | 198                                    | 18 | 5200            | ±220                     | 82             |
| AM2D-1224DH52Z | 10.8-13.2         | ±24                | ±42                     | 201                                    | 15 | 5200            | ±220                     | 82             |
| AM2D-2403DH52Z | 21.6-26.4         | ±3.3               | ±200                    | 110                                    | 10 | 5200            | ±220                     | 68             |
| AM2D-2405DH52Z | 21.6-26.4         | ±5                 | ±200                    | 102                                    | 8  | 5200            | ±220                     | 75             |
| AM2D-2407DH52Z | 21.6-26.4         | ±7.2               | ±139                    | 104                                    | 10 | 5200            | ±220                     | 75             |
| AM2D-2409DH52Z | 21.6-26.4         | ±9                 | ±111                    | 102                                    | 8  | 5200            | ±220                     | 80             |
| AM2D-2412DH52Z | 21.6-26.4         | ±12                | ±83                     | 100                                    | 8  | 5200            | ±220                     | 82             |
| AM2D-2415DH52Z | 21.6-26.4         | ±15                | ±67                     | 98                                     | 8  | 5200            | ±220                     | 82             |
| AM2D-2418DH52Z | 21.6-26.4         | ±18                | ±55                     | 102                                    | 10 | 5200            | ±220                     | 82             |
| AM2D-2424DH52Z | 21.6-26.4         | ±24                | ±42                     | 100                                    | 12 | 5200            | ±220                     | 82             |
| AM2D-4803DH52Z | 43.2-52.8         | ±3.3               | ±200                    | 53                                     | 5  | 5200            | ±220                     | 68             |
| AM2D-4805DH52Z | 43.2-52.8         | ±5                 | ±200                    | 53                                     | 5  | 5200            | ±220                     | 75             |
| AM2D-4807DH52Z | 43.2-52.8         | ±7.2               | ±139                    | 52                                     | 10 | 5200            | ±220                     | 75             |
| AM2D-4809DH52Z | 43.2-52.8         | ±9                 | ±111                    | 52                                     | 8  | 5200            | ±220                     | 80             |
| AM2D-4812DH52Z | 43.2-52.8         | ±12                | ±83                     | 50                                     | 5  | 5200            | ±220                     | 82             |
| AM2D-4815DH52Z | 43.2-52.8         | ±15                | ±67                     | 52                                     | 8  | 5200            | ±220                     | 82             |
| AM2D-4818DH52Z | 43.2-52.8         | ±18                | ±55                     | 51                                     | 8  | 5200            | ±220                     | 82             |
| AM2D-4824DH52Z | 43.2-52.8         | ±24                | ±42                     | 51                                     | 10 | 5200            | ±220                     | 82             |
| AM2D-0503DH60Z | 4.5-5.5           | ±3.3               | ±200                    | 506                                    | 20 | 6000            | ±220                     | 65             |
| AM2D-0505DH60Z | 4.5-5.5           | ±5                 | ±200                    | 470                                    | 20 | 6000            | ±220                     | 72             |
| AM2D-0507DH60Z | 4.5-5.5           | ±7.2               | ±139                    | 482                                    | 25 | 6000            | ±220                     | 72             |
| AM2D-0509DH60Z | 4.5-5.5           | ±9                 | ±111                    | 476                                    | 30 | 6000            | ±220                     | 77             |
| AM2D-0512DH60Z | 4.5-5.5           | ±12                | ±83                     | 471                                    | 30 | 6000            | ±220                     | 78             |
| AM2D-0515DH60Z | 4.5-5.5           | ±15                | ±67                     | 465                                    | 25 | 6000            | ±220                     | 80             |
| AM2D-0518DH60Z | 4.5-5.5           | ±18                | ±55                     | 500                                    | 32 | 6000            | ±220                     | 80             |
| AM2D-0524DH60Z | 4.5-5.5           | ±24                | ±42                     | 500                                    | 25 | 6000            | ±220                     | 80             |
| AM2D-1203DH60Z | 10.8-13.2         | ±3.3               | ±200                    | 219                                    | 12 | 6000            | ±220                     | 67             |
| AM2D-1205DH60Z | 10.8-13.2         | ±5                 | ±200                    | 211                                    | 10 | 6000            | ±220                     | 75             |
| AM2D-1207DH60Z | 10.8-13.2         | ±7.2               | ±139                    | 201                                    | 16 | 6000            | ±220                     | 76             |
| AM2D-1209DH60Z | 10.8-13.2         | ±9                 | ±111                    | 196                                    | 10 | 6000            | ±220                     | 77             |
| AM2D-1212DH60Z | 10.8-13.2         | ±12                | ±83                     | 194                                    | 13 | 6000            | ±220                     | 82             |
| AM2D-1215DH60Z | 10.8-13.2         | ±15                | ±67                     | 201                                    | 15 | 6000            | ±220                     | 82             |
| AM2D-1218DH60Z | 10.8-13.2         | ±18                | ±55                     | 198                                    | 18 | 6000            | ±220                     | 82             |
| AM2D-1224DH60Z | 10.8-13.2         | ±24                | ±42                     | 201                                    | 15 | 6000            | ±220                     | 82             |
| AM2D-2403DH60Z | 21.6-26.4         | ±3.3               | ±200                    | 110                                    | 10 | 6000            | ±220                     | 68             |
| AM2D-2405DH60Z | 21.6-26.4         | ±5                 | ±200                    | 102                                    | 8  | 6000            | ±220                     | 75             |
| AM2D-2407DH60Z | 21.6-26.4         | ±7.2               | ±139                    | 104                                    | 10 | 6000            | ±220                     | 75             |

**Models**

**Dual output (continued)**

| Model          | Input Voltage (V) | Output Voltage (V) | Output Current Max (mA) | Input Current Full Load   No Load (mA) |    | Isolation (VDC) | Max Capacitive Load (µF) | Efficiency (%) |
|----------------|-------------------|--------------------|-------------------------|--|----|-----------------|--------------------------|----------------|
| AM2D-2409DH60Z | 21.6-26.4         | ±9                 | ±111                    | 102                                    | 8  | 6000            | ±220                     | 80             |
| AM2D-2412DH60Z | 21.6-26.4         | ±12                | ±83                     | 100                                    | 8  | 6000            | ±220                     | 82             |
| AM2D-2415DH60Z | 21.6-26.4         | ±15                | ±67                     | 98                                     | 8  | 6000            | ±220                     | 82             |
| AM2D-2418DH60Z | 21.6-26.4         | ±18                | ±55                     | 102                                    | 10 | 6000            | ±220                     | 82             |
| AM2D-2424DH60Z | 21.6-26.4         | ±24                | ±42                     | 100                                    | 12 | 6000            | ±220                     | 82             |
| AM2D-4803DH60Z | 43.2-52.8         | ±3.3               | ±200                    | 53                                     | 5  | 6000            | ±220                     | 68             |
| AM2D-4805DH60Z | 43.2-52.8         | ±5                 | ±200                    | 53                                     | 5  | 6000            | ±220                     | 75             |
| AM2D-4807DH60Z | 43.2-52.8         | ±7.2               | ±139                    | 52                                     | 10 | 6000            | ±220                     | 75             |
| AM2D-4809DH60Z | 43.2-52.8         | ±9                 | ±111                    | 52                                     | 8  | 6000            | ±220                     | 80             |
| AM2D-4812DH60Z | 43.2-52.8         | ±12                | ±83                     | 50                                     | 5  | 6000            | ±220                     | 82             |
| AM2D-4815DH60Z | 43.2-52.8         | ±15                | ±67                     | 52                                     | 8  | 6000            | ±220                     | 82             |
| AM2D-4818DH60Z | 43.2-52.8         | ±18                | ±55                     | 51                                     | 8  | 6000            | ±220                     | 82             |
| AM2D-4824DH60Z | 43.2-52.8         | ±24                | ±42                     | 51                                     | 10 | 6000            | ±220                     | 82             |

**Models**

**Dual separated output**

| Model         | Input Voltage (V) | Output Voltage (V) | Output Current Max (mA) | Input Current Full Load   No Load (mA) |    | Isolation (VDC) | Max Capacitive Load (µF) | Efficiency (%) |
|---------------|-------------------|--------------------|-------------------------|--|----|-----------------|--------------------------|----------------|
| AM2D-050303DZ | 4.5-5.5           | 3.3 / 3.3          | 200 / 200               | 588                                    | 25 | 1000            | ±220                     | 73             |
| AM2D-050505DZ | 4.5-5.5           | 5 / 5              | 200 / 200               | 548                                    | 25 | 1000            | ±220                     | 78             |
| AM2D-050707DZ | 4.5-5.5           | 7.2 / 7.2          | 139 / 139               | 519                                    | 25 | 1000            | ±220                     | 75             |
| AM2D-050909DZ | 4.5-5.5           | 9 / 9              | 111 / 111               | 506                                    | 30 | 1000            | ±220                     | 78             |
| AM2D-051212DZ | 4.5-5.5           | 12 / 12            | 83 / 83                 | 494                                    | 30 | 1000            | ±220                     | 82             |
| AM2D-051515DZ | 4.5-5.5           | 15 / 15            | 67 / 67                 | 488                                    | 30 | 1000            | ±220                     | 82             |
| AM2D-051818DZ | 4.5-5.5           | 18 / 18            | 55 / 55                 | 482                                    | 26 | 1000            | ±220                     | 79             |
| AM2D-052424DZ | 4.5-5.5           | 24 / 24            | 42 / 42                 | 488                                    | 30 | 1000            | ±220                     | 75             |
| AM2D-120303DZ | 10.8-13.2         | 3.3 / 3.3          | 200 / 200               | 245                                    | 10 | 1000            | ±220                     | 73             |
| AM2D-120505DZ | 10.8-13.2         | 5 / 5              | 200 / 200               | 225                                    | 18 | 1000            | ±220                     | 78             |
| AM2D-120707DZ | 10.8-13.2         | 7.2 / 7.2          | 139 / 139               | 211                                    | 15 | 1000            | ±220                     | 75             |
| AM2D-120909DZ | 10.8-13.2         | 9 / 9              | 111 / 111               | 203                                    | 13 | 1000            | ±220                     | 78             |
| AM2D-121212DZ | 10.8-13.2         | 12 / 12            | 83 / 83                 | 203                                    | 23 | 1000            | ±220                     | 82             |
| AM2D-121515DZ | 10.8-13.2         | 15 / 15            | 67 / 67                 | 201                                    | 20 | 1000            | ±220                     | 82             |
| AM2D-121818DZ | 10.8-13.2         | 18 / 18            | 55 / 55                 | 198                                    | 16 | 1000            | ±220                     | 78             |
| AM2D-122424DZ | 10.8-13.2         | 24 / 24            | 42 / 42                 | 196                                    | 15 | 1000            | ±220                     | 75             |
| AM2D-240303DZ | 21.6-26.4         | 3.3 / 3.3          | 200 / 200               | 117                                    | 6  | 1000            | ±220                     | 73             |
| AM2D-240505DZ | 21.6-26.4         | 5 / 5              | 200 / 200               | 111                                    | 7  | 1000            | ±220                     | 78             |
| AM2D-240707DZ | 21.6-26.4         | 7.2 / 7.2          | 139 / 139               | 110                                    | 12 | 1000            | ±220                     | 75             |
| AM2D-240909DZ | 21.6-26.4         | 9 / 9              | 111 / 111               | 103                                    | 7  | 1000            | ±220                     | 78             |
| AM2D-241212DZ | 21.6-26.4         | 12 / 12            | 83 / 83                 | 99                                     | 6  | 1000            | ±220                     | 82             |
| AM2D-241515DZ | 21.6-26.4         | 15 / 15            | 67 / 67                 | 98                                     | 6  | 1000            | ±220                     | 82             |
| AM2D-241818DZ | 21.6-26.4         | 18 / 18            | 55 / 55                 | 97                                     | 6  | 1000            | ±220                     | 75             |
| AM2D-242424DZ | 21.6-26.4         | 24 / 24            | 42 / 42                 | 97                                     | 8  | 1000            | ±220                     | 75             |
| AM2D-480303DZ | 43.2-52.8         | 3.3 / 3.3          | 200 / 200               | 56                                     | 5  | 1000            | ±220                     | 78             |
| AM2D-480505DZ | 43.2-52.8         | 5 / 5              | 200 / 200               | 56                                     | 4  | 1000            | ±220                     | 78             |
| AM2D-480707DZ | 43.2-52.8         | 7.2 / 7.2          | 139 / 139               | 53                                     | 5  | 1000            | ±220                     | 78             |
| AM2D-480909DZ | 43.2-52.8         | 9 / 9              | 111 / 111               | 54                                     | 5  | 1000            | ±220                     | 78             |
| AM2D-481212DZ | 43.2-52.8         | 12 / 12            | 83 / 83                 | 50                                     | 4  | 1000            | ±220                     | 80             |
| AM2D-481515DZ | 43.2-52.8         | 15 / 15            | 67 / 67                 | 50                                     | 5  | 1000            | ±220                     | 80             |
| AM2D-481818DZ | 43.2-52.8         | 18 / 18            | 55 / 55                 | 52                                     | 6  | 1000            | ±220                     | 80             |
| AM2D-482424DZ | 43.2-52.8         | 24 / 24            | 42 / 42                 | 52                                     | 6  | 1000            | ±220                     | 80             |

## Input Specifications

| Parameters                     | Nominal   | Typical   | Maximum | Units  |
|--------------------------------|-----------|-----------|---------|--------|
| Voltage range                  | 5         | 4.5-5.5   |         | VDC    |
|                                | 12        | 10.8-13.2 |         |        |
|                                | 24        | 21.6-26.4 |         |        |
|                                | 48        | 43.2-52.8 |         |        |
| Filter                         | Capacitor |           |         |        |
| Turn on Transient process time |           |           | 25      | ms     |
| Start up time                  |           | 200       |         | ms     |
| Absolute Maximum Rating        | 5 Vin     | 0-7       |         | VDC    |
|                                | 12 Vin    | 0-15      |         |        |
|                                | 24 Vin    | 0-28      |         |        |
|                                | 48 Vin    | 0-54      |         |        |
| Peak Input Voltage time        |           | 100       |         | ms     |
| Input Reflected Ripple Current |           | 20        |         | mA p-p |

## Isolation Specifications

| Parameters         | Conditions | Typical | Rated                        | Units |
|--------------------|------------|---------|------------------------------|-------|
| Tested I/O voltage | 60sec      |         | 1000, 3000, 4000, 5200, 6000 | VDC   |
| Resistance         |            | > 1000  |                              | MOhm  |
| Capacitance        |            | 60      |                              | pF    |

## Output Specifications

| Parameters   | Conditions         | Typical           | Maximum | Units  |
|--|--------------------|-------------------|---------|--------|
| Voltage accuracy                                   |                    | ±3                |         | %      |
| Voltage balance                                    | Dual output        | ±1                |         | %      |
| Short Circuit protection                           |                    | Momentary (1sec). |         |        |
| Line voltage regulation (Single)                   | For 1.0% of Vin    | ±1.2              |         | %      |
| Line voltage regulation (Dual)                     | For 1.0% of Vin    | ±1.2              |         | %      |
| Load voltage regulation (Single)                   | Load 20~100%       | ±10               |         | %      |
| Load voltage regulation (Single) 3.3V output model | Load 20~100%       | ±20               |         | %      |
| Load voltage regulation (Dual)                     | Load 20~100%       | ±10               |         | %      |
| Load voltage regulation (Dual) 3.3V output model   | Load 20~100%       | ±20               |         | %      |
| Temperature coefficient                            |                    | ±0.02             |         | %/°C   |
| Ripple & Noise                                     | At 20MHz Bandwidth | 75                |         | mV p-p |
| Capacitive load                                    | Single output      |                   | 470     | μF     |
|  | Dual output        |                   | 220     | μF     |
| Rising time  |                    | 100               |         | ms     |

## General Specifications

| Parameters             | Conditions | Typical   | Maximum                | Units |
|------------------------|------------|---|------------------------|-------|
| Switching frequency    | 100% load  | 85  |                        | KHz   |
| Operating temperature  | Full Load  |   | -40 to +85             | °C    |
| Storage temperature    |            |   | -55 to +125            | °C    |
| Max Case temperature   |            |   | +95                    | °C    |
| Cooling                |            | Free air convection                                     |                        |       |
| Humidity               |            |   | 90                     | %     |
| Case material          |            | Plastic UL94-VO   |                        |       |
| Weight                 |            | 2.5   |                        | g     |
| Dimensions (L x W x H) |            | 0.76 x 0.24 x 0.37 inch                                 | 19.50 x 6.00 x 9.50 mm |       |
| MTBF                   |            | >1 121 000 hrs (MIL-HDBK -217F, Ground Benign, t=+25°C) |                        |       |

NOTE: All specifications in this datasheet are measured at an ambient temperature of 25°C, humidity<75%, nominal input voltage and at rated output load unless otherwise specified



## Safety Specifications

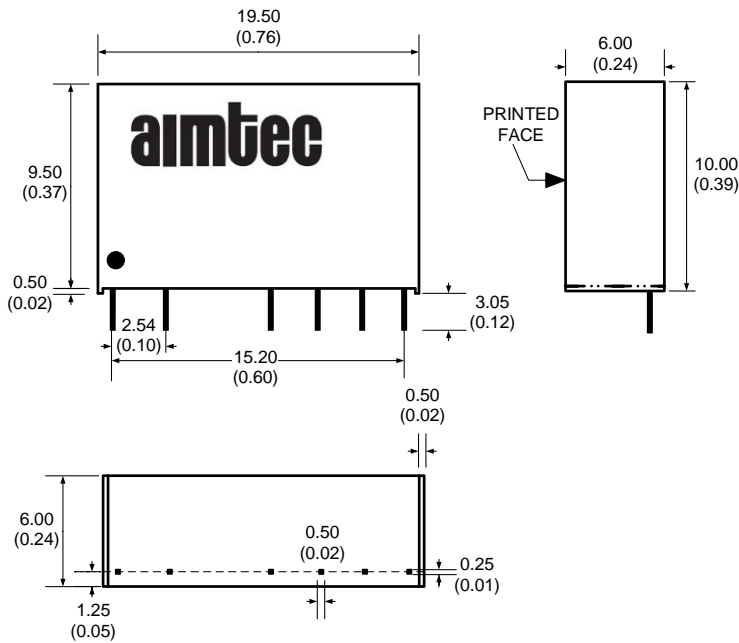
### Parameters

|                  |   |
|------------------|---|
| Agency approvals | CE (Except dual separated models)           |
| Standards        | EN55022 (Radiated Emissions) class B        |
|                  | EN55024 (Noise Immunity), IEC61000-4-2(ESD) |
|                  | IEC61000-4-3(Radiated immunity)             |

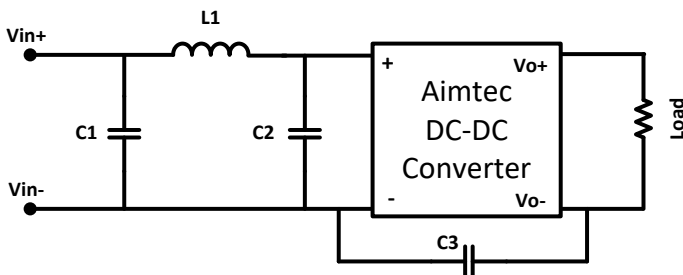
## Pin Out Specifications

| Pin | 1000 VDC   |            |                | 3000, 4000, 5200, 6000 VDC |           |
|-----|------------|------------|----------------|----------------------------|-----------|
|     | Single     | Dual       | Dual separated | Single                     | Dual      |
| 1   | + V Input  | + V Input  | + V Input      | + V Input                  | + V Input |
| 2   | - V Input  | - V Input  | - V Input      | - V Input                  | - V Input |
| 4   | - V Output | - V Output | +V1 Output     | No pin                     | No pin    |
| 5   | No pin     | Common     | -V1 Output     | -V Output                  | -V Output |
| 6   | + V Output | + V Output | +V2 Output     | No pin                     | Common    |
| 7   | No pin     | No pin     | -V2 Output     | +V Output                  | +V Output |

## Dimensions



## EMI Filter Circuit

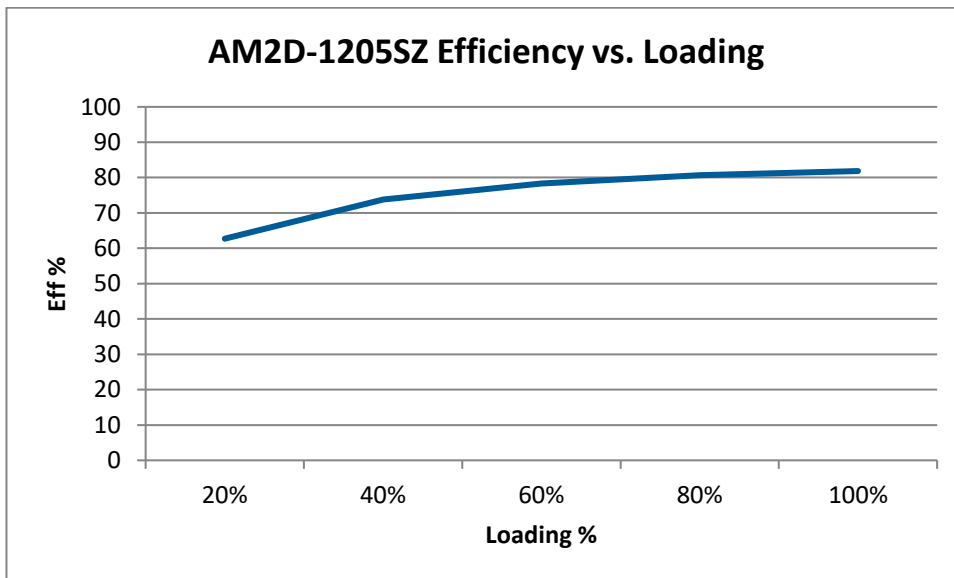
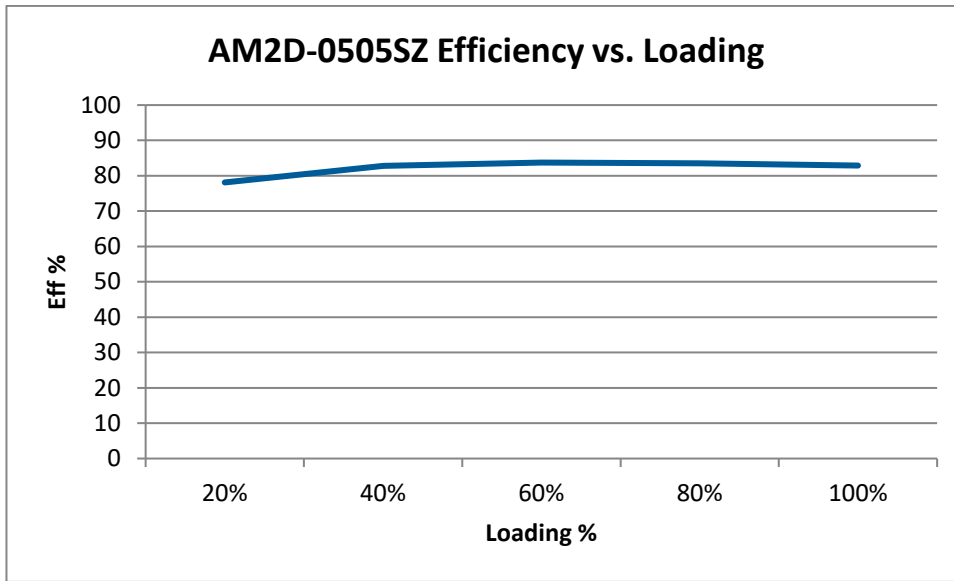


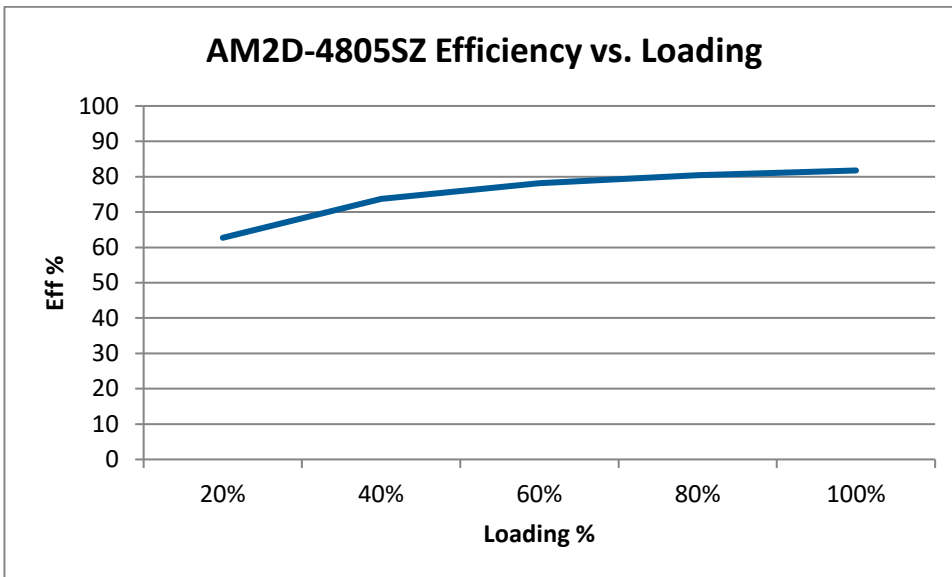
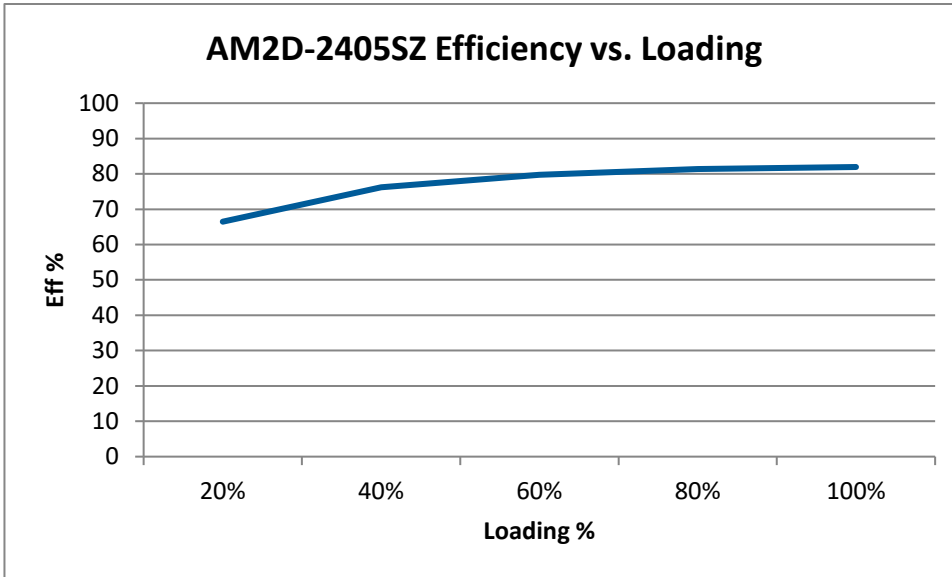
**Vin      C1      L1      C2      C3**

|       |                   |            |                  |            |
|-------|-------------------|------------|------------------|------------|
| 3Vin  | 2.2 $\mu$ F/100V  | 18 $\mu$ H | -                | -          |
| 5Vin  | 2.2 $\mu$ F/100V  | 18 $\mu$ H | -                | -          |
| 12Vin | 2.2 $\mu$ F/100V  | 18 $\mu$ H | -                | -          |
| 15Vin | 2.2 $\mu$ F/100V  | 18 $\mu$ H | -                | -          |
| 24Vin | 2.2 $\mu$ F/100V  | 18 $\mu$ H | 2.2 $\mu$ F/100V | 470 pF/2kV |
| 48Vin | 10 $\mu$ F/100V * | 18 $\mu$ H | 2.2 $\mu$ F/100V | 470 pF/2kV |

\* Electrolytic Type

### Typical Efficiency Chart Examples





**NOTE:** **1.** Datasheets are updated as needed and as such, specifications are subject to change without notice. Once printed or downloaded, datasheets are no longer controlled by Aimtec; refer to [www.aimtec.com](http://www.aimtec.com) for the most current product specifications. **2.** Product labels shown, including safety agency certifications on labels, may vary based on the date manufactured. **3.** Mechanical drawings and specifications are for reference only. **4.** All specifications are measured at an ambient temperature of 25°C, humidity < 75%, nominal input voltage and at rated output load unless otherwise specified. **5.** Aimtec may not have conducted destructive testing or chemical analysis on all internal components and chemicals at the time of publishing this document. CAS numbers and other limited information are considered proprietary and may not be available for release. **6.** This product is not designed for use in critical life support systems, equipment used in hazardous environments, nuclear control systems or other such applications which necessitate specific safety and regulatory standards other than the ones listed in this datasheet. **7.** Warranty is in accordance with Aimtec's standard Terms of Sale available at [www.aimtec.com](http://www.aimtec.com).